

Aquatic Critters

Arachnids: *Mites and Spiders*

Water Mites



1-3 mm

Wolf Spiders



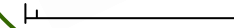
2-25 mm

Annelids:

Leeches and Worms

Leeches

light or dark brown, black



5-30 mm

Earthworms

from the land



Crustaceans: *Shrimp and kin*

Water Fleas



1-2 mm

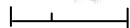
Seed Shrimp



1-2 mm

Side Swimmers

clear, grey, or blue

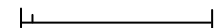


5-15 mm

Molluscs:

Soft body, hard shell

Snails



2-25 mm

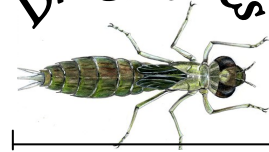


FortWhyte Alive

HUMAN. NATURE.

Insects

Dragonflies



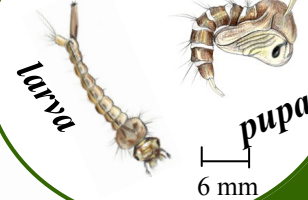
35 mm or smaller
Dragonfly nymph

Damselflies



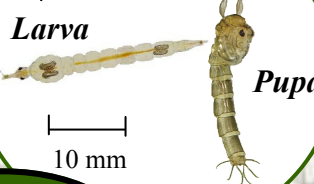
15-25 mm
Damselfly nymph

Mosquitoes



larva pupa
6 mm

Phantom Midges



Larva Pupa
10 mm

Flies

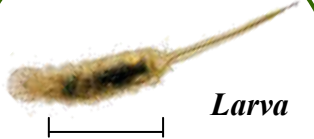
Midges

Red or clear



Larva Pupa
10 mm or smaller

Rat-tailed Maggot



Larva
15 mm, tail can stretch 5 times longer

Springtails



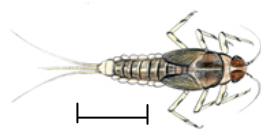
1-2 mm

Caddisflies



15 mm
Caddisfly larva

Mayflies



9 mm or smaller
Mayfly nymph

Water Scorpions



40 mm or smaller

Giant Water Bugs



25-50 mm or smaller

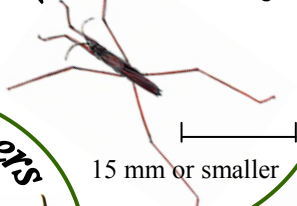
Water Boatmen



10 mm or smaller

True Bugs

Water Striders



15 mm or smaller

Pygmy Backswimmers



2-3 mm

Backswimmers



15 mm or smaller

Beetles

Water Scavenger Beetles



3-15 mm

Whirligig Beetles



3-10 mm

Predaceous Diving Beetles



3-15 mm

Predaceous Diving Beetles



3-15 mm
"Water Tiger" Larva